

# 远程无线摄像机使用说明书

## Remote Wireless Camera User Instruction

**前言:**感谢您购买本产品,为了您更好的使用本产品,请仔细阅读使用说明书后再进行操作。本产品为支持远程无线网络的家庭安防产品,可与电脑及手机等进行连接和通讯。

Thank you for buying this product. For better use of this product, please read the instructions carefully before the operation. This product is the home security product that supports remote wireless network. It can connect and communicate with computer and mobile phone.

### 一、 安装 APP

#### 方法一:

用手机扫描以下二维码,进入 APP 下载页面,根据你手机的操作系统选择对应的下载链接,进行下载并安装。

##### 1. Install the APP

method one:

Scan the following QR code with your mobile phone to enter the APP download page. Select the corresponding download link according to your mobile phone operating system, download and install

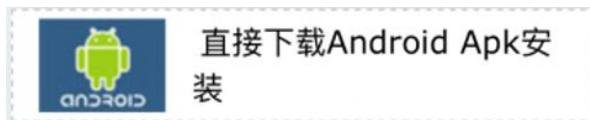


it.



#### 注意:

该下载连接仅适用于中国大陆。



#### Note:

This download link is for Mainland China only.

#### 方法二:

安卓手机,在 Google Play 搜索名为 HDMiniCam 的 APK,下载安装。

苹果手机,在 APP Store 搜索名为 HDMiniCam 的 APP,下载安装。

Method Two:

Android mobile: search for HDMiniCam on Google Play, download and install.

Apple mobile: search for HDMiniCam in the APP Store, download and install.

## 安装完成:

无论是通过扫描二维码的方式或者通过在手机应用市场搜索的方式, 您看到的应用程序都应该是右图的这个图标和名称, 当安装完成后, 在手机中新增的应用也应该是这个图标和名称, 如果不是, 请仔细阅读说明书, 并重新进行操作。



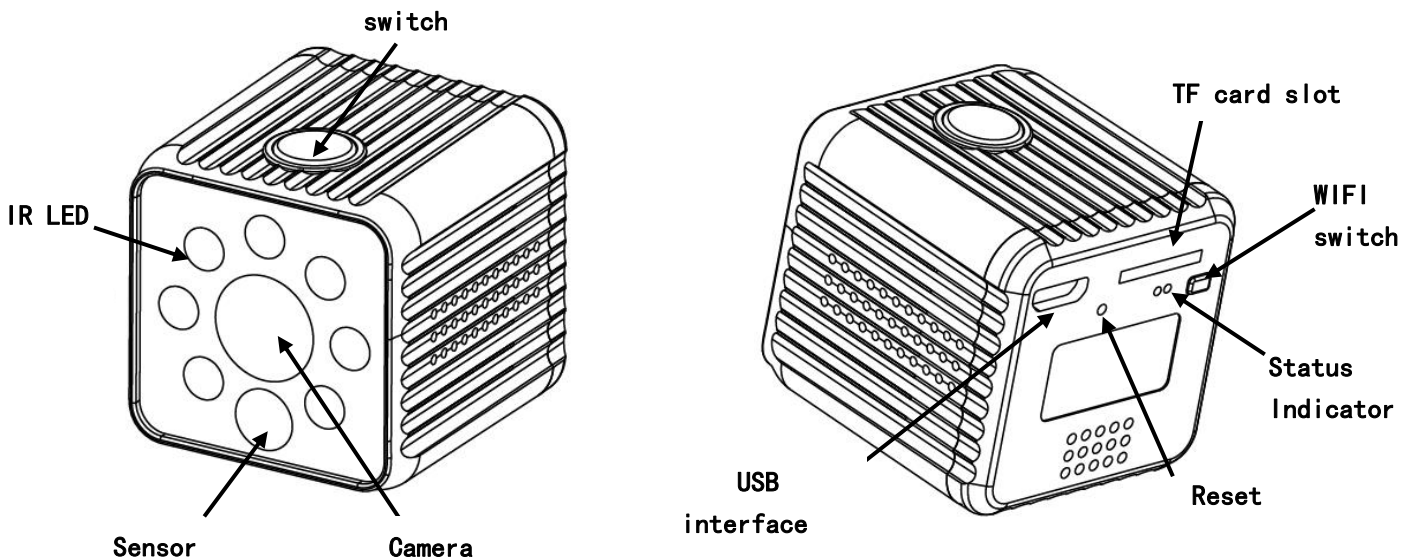
**HDMiniCam**

Installation completion:

Either by scanning the QR code or through the mobile phone App market search, the APP icon should be the same on the right. After the installation, this icon will be added into your mobile phone. If not, please read the instructions carefully, and do it again.

## 二、 结构说明

### 2. Structure



部件	说明	部件	说明
开关键	用于打开和关闭摄像机电源	红外灯	用于照度不够时补充照明
亮度传感器	用于检测环境光线亮度	摄像头	用于拍摄画面
TF 卡插槽	用于插入标准 Micro SD 卡 (TF 卡)	WIFI 开关	用于打开或关闭 WIFI 功能
USB 接口	用于数据传输以及充电	重置开关	用于恢复出厂设置
状态指示灯	红灯: 充电指示灯; 绿灯: 工作指示灯; 蓝灯: WIFI 状态指示灯		

Part	Description	Part	Description
Switch	Turn on or turn off the power supply	IR LED	lighting when the brightness is not enough
Sensor	detect ambient light	Camera	Take photo or video
TF card slot	Insert the TF or Micro SD card	WIFI switch	Turn on or turn off the WIFI
USB Socket	Data transmission and charging	Reset	Restore factory settings
Status Indicator	Red light: charging indicator; Green light: work indicator; Blue light: WIFI status indicator		

## 三、 操作方法

### 1. 开关机：

**开机：**短按开关机键，即可打开设备的电源。红蓝灯同时点亮，表示电源已经开启，随后红灯熄灭，只剩蓝灯长亮，表示机器正处于初始化的过程中，最后红灯亮起，表示启动完成，整个开机过程大概需要 40 秒左右的时间。

**关机：**设备启动完成后，长按开关机键，即可关闭设备的电源，电源关闭后，指示灯全部熄灭，此时可以松开开关机键。注意：开机过程中无法关闭设备电源，按键长按无效。

### 2. 通过手机直接连接设备（点对点连接）

这种连接方式又被称为点对点模式或者 P2P 模式。在该连接方式下，设备本身作为一个 WIFI 热点供手机直接进行连接，中间无需经过路由器，成功建立手机与设备的连接后，你可以查看和修改摄像机的设置、查阅已拍摄的视频和照片。

- 开启设备电源，等待设备初始化完成。
- 开机完成后，进入手机的设置界面，打开 WIFI 设置菜单，开启手机的 WIFI 功能并搜索周边的 WIFI 设备。
- 在手机已经搜索到的 WIFI 设备列表里面，会出现一个由字母，数字以及连接符组成的较长的字符串，参考下图。该字符串是设备的 SSID 名称，同时也是设备的 UID 号（即用户编号，每个设备的编号都是唯一的）。

### 3. Operation method

#### 1. Switch on/ Switch off

Switch on: short press the switch button, you can turn on the device's power. Red and blue lights are on at the same time. Indicating the power has been turned on. Then red light is off, only the blue light is on, indicating the device is in the process of boot. At last the red light is on again, indicating the boot is completed. The boot process takes about 40 seconds.

Switch off: After the device is started up, long press the switch button to turn off the power of the device. After the power is turned off, all the lights are off. At this time, you can release the power button.

Note: the device can not be turned off during boot process. The long pressing is invalid at that time.

#### 2. Connect the device by mobile phone directly (point-to-point connection)

This connection is also known as P2P mode. In this connection, the device itself works as a WIFI hotspot for direct connection of the mobile phone without the router. After the establishment of the connection between the phone and the device, you can view and modify the camera settings, view the video and photo has been taken.

Turn on the device and wait for the device initialization.

After switch on, enter the setting interface of the mobile phone, get into the WIFI setting menu, switch on the WIFI function and search the peripheral WIFI devices.

In the list of WIFI devices that showing on the mobile phone, you can see a device name with complicated letters, numbers. Refer to the figure below. It is the device's SSID name, which is also the device's UID number (UID=User ID. The number of each device is unique).

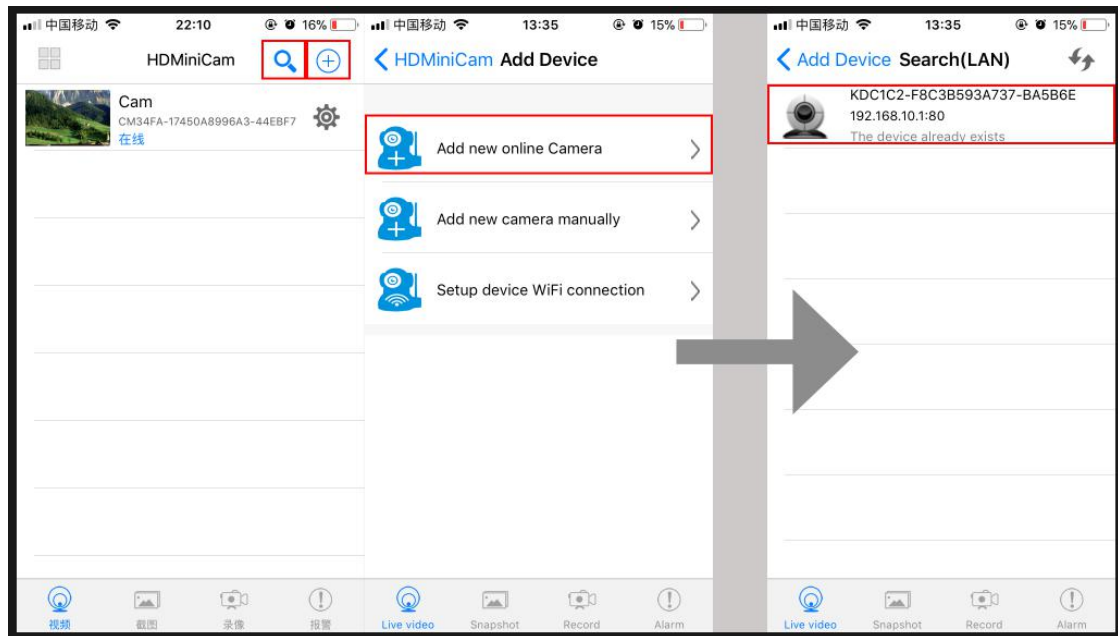


- 选中并连接该设备。初次使用，该设备没有连接密码。如果已经在设置中添加或修改过密码，请输入正确的密码进行连接；如果忘记了设置过的密码，请进行“恢复出厂设置”操作，使设备还原出厂设置，清空密码。
- WIFI 设备连接成功后，打开支持该设备的手机 APP，进行搜索，当设备出现在搜索结果列表中，即可选择和添加该设备到你的设备列表中。你也可以通过添加设备的相关选项，手动添加。

Select and connect the device. For initial use, this device does not have a connection password. If you have already added or changed the password in the settings, please enter the correct password to connect; if you forget the password, please reset the device to factory default and clear the password.

After the WIFI device is successfully connected, open the APP that supports this device and search. When the device appears in the search result list, you can select and add the device to your device list. You can also add it manually by adding device related options.





- 连接完成后，就可以对在线设备进行控制和参数设置，比如为当前设备设置联网参数，使得设备可以通过无线路由器连接上互联网，实现远程访问，等等。具体项目和参数设置的方法和步骤，参见后文说明。

After the connection is completed, you can control the online devices and set parameters, such as setting networking parameters for the current device, enabling the device to connect to the Internet through a wireless router for remote access, and so on. For details on the methods and procedures for setting items and parameters, see the description below.

### 3. 开启远程监控功能：

开启远程监控功能后，设备通过路由器连接到互联网上，你可以通过手机或者电脑，在有互联网的任意地方连接设备，远程查看和修改它的设置、查阅已拍摄的视频和照片、查看当前设备的实时画面，非常适合用于安防监控。

要开启远程监控功能，先要进行一些必要的设置，具体的步骤和方法如下：

- 将手机直接连接设备，连接方法参见前文的“通过手机直接连接设备”相关描述。
- 打开手机 APP，进入设备列表中，点击设备列表中的设置按钮，准备进行 WIFI 参数设置。

#### 3. Open the remote monitoring function:

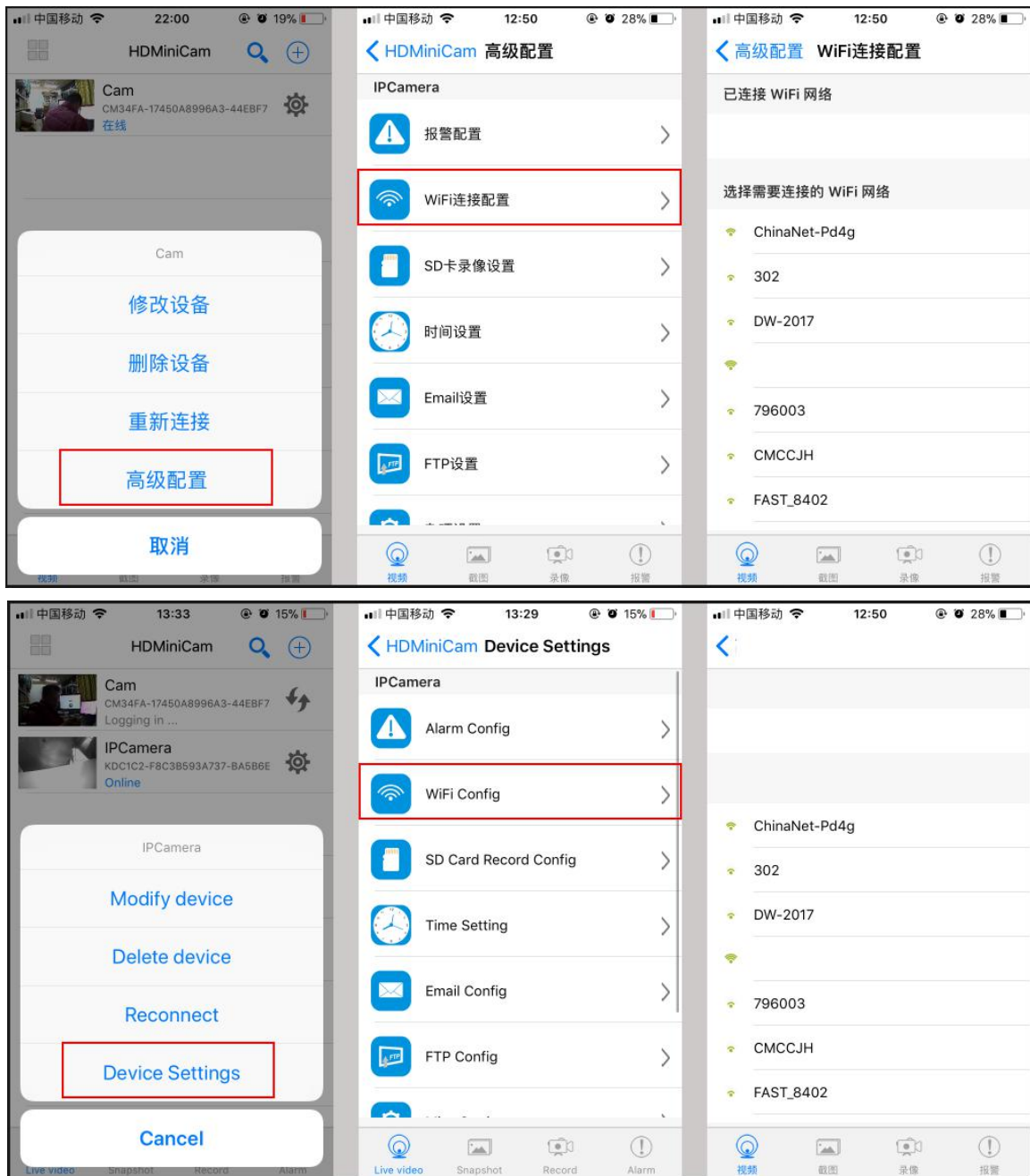
After turn on the remote monitoring function, the device can be connected to the Internet through a router. You can connect to the device from anywhere on the Internet through your mobile phone or computer, remotely view and modify its settings, view the captured video and photos, view the current device Real-time screen. It is ideal for security monitoring.

To open the remote monitoring function, you must first make some necessary settings, the specific steps and methods are as follows:

Connect the phone directly to the device. For the connection method, see the related description of "Connect the device directly by mobile phone" above.

Open the APP on mobile phone, enter the device list, click the Settings button in the device list, get ready for WIFI parameter settings.





- 进入高级配置，选择 WiFi 连接配置，在 WiFi 列表里面选择你自用的 WiFi 并根据提示输入密码。  
注意：输入密码必须确保正确，否则会导致手机无法连接设备，只能恢复出厂设置。
- 完成设置后，设备将自动重启，重启完成后，即可通过手机和设备建立远程连接。

Enter the advanced configuration, select the WiFi connection configuration, select your own WiFi in the WiFi list and enter the password as prompted.

Note: The password must be correct. Otherwise, the mobile phone will not be able to connect to the device, and you can only restore the factory settings.

After setting, the device will reboot automatically. After reboot, you can establish a remote connection with the device through the mobile phone.

#### 4. 户外省电模式

当需要将设备作为一个便携摄像机，在没有电源的地方拍摄使用，可以在手机上先启动录像功能，然后按下 WIFI 开关，关闭 WiFi 信号，以减小功耗，节省电能。关闭 WiFi 模块后，手机和电脑都无法连接到设备上。需要网络连接时，可以再次打开 WiFi 模块。

##### 4 outdoor power-saving mode

When you need to use the device as a portable video camera when there is no power supply, you can start the recording function on the mobile phone first. Then press the WIFI switch to turn off the WiFi signal to reduce power consumption and save power. When the WiFi module is turned off, both the phone and the computer can not connect to the device. When you need an internet connection, you can turn on the WiFi module again.

## 5. 其他重要功能参数说明:

本产品拥有多种实用的功能，并可以通过 APP 对其进行功能操作和参数设置，二者是一个整体，配合使用，才能发挥出最大的作用。在此之前，先要将设备与手机通过直接或者远程的方式建立连接，连接方法参考前文相关描述。

设备的功能以及对应的 APP 界面的详细说明如下:

### 1) 同时预览 4 台设备的实时画面。

如果你已经购买了多个设备，可以在一个界面中选择比较重要或者关键的 4 个设备并对其进行实时预览，在该界面下，你还可以进行如下操作:

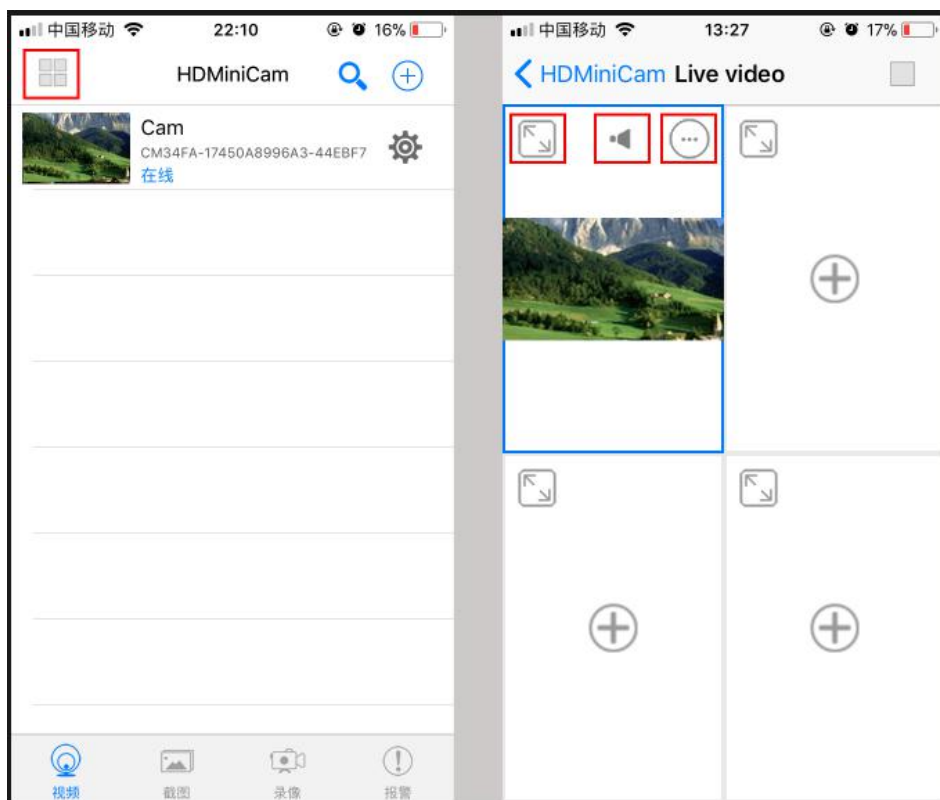
#### 5. Other important functions Parameter Description:

This product has a variety of useful features. Can do the operation and parameter settings through the APP. In order to make it work better, we must first establish the connection between the device and the mobile phone directly or remotely. For the connection method, refer to the related description above.

The function of the device and the corresponding APP interface are as following:

### 1) Simultaneous preview of 4 devices in real time.

If you already purchased multiple devices, you can select and preview the 4 important devices in one interface in real time. Under this interface, you can also do the following:



- 展开具体某一台设备的画面。
- 添加或者删除该窗格的画面。
- 监听其中一台设备的声音。
- 进入该设备对应的高级配置。

Expand a specific device screen.

Add or delete the pane's screen.

Listen to the sound of one of the devices.

Enter the corresponding advanced configuration of the device.

### 2) View and manage mobile screenshots.

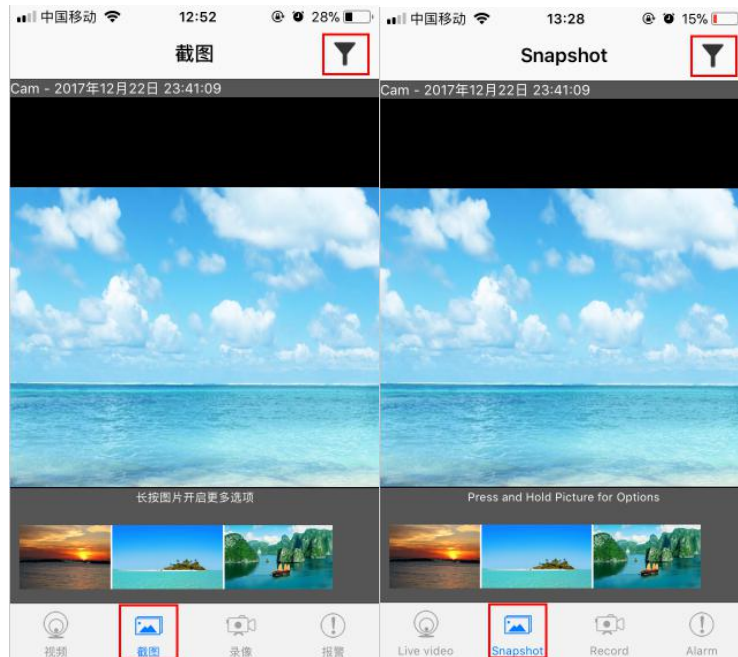
With this function, you can view the screen shot of the device on your mobile phone and screen out the screenshot of your specific device. At the same time, you can dump, share, and manage the screenshot.

### 2) 查看和管理手机截图。

在该功能下，可以查看手机上对设备画面进行的截图，并且可以筛选出你具体的设备的截图，同时可以对该截图进行转存、分享、管理等操作。

## 2) View and manage mobile phone screenshots.

With this function, you can view the screenshot of the device on your mobile phone and select the screenshot of your specific device. At the same time, you can save, share, and manage the screenshot.



## 3) 查看和管理手机以及设备的视频。

- 查看和管理手机视频

在该功能下，可以查看手机上对设备画面进行的录像，并且可以将你需要的设备的视频筛选出来，同时可以对该视频进行转存、分享、管理等操作。

- 查看和管理设备存储卡的视频（设备中插有工作正常的存储卡）

在该功能下，可以查看设备存储卡中的视频，并且可以将你需要的设备的视频筛选出来，同时可以对该视频进行下载、转存、分享、管理等操作。

A	设备筛选
B	已下载视频列表
C	下载中的视频列表
D	设备存储卡文件列表
E	手机端文件列表

View and manage videos on your phone and device.

### View and manage mobile video

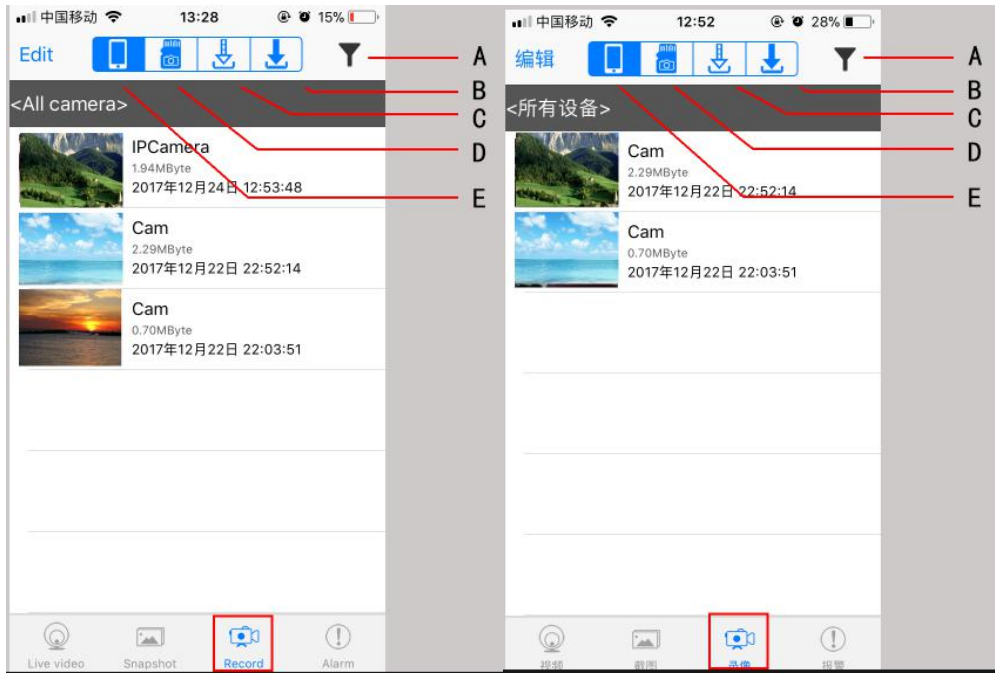
In this function, you can view the videos taken by mobile phone of the device screen. And you can select the video, do the saving, sharing, management etc.

### View and manage the video of the device's memory card (the device has a working memory card in it)

In this function, you can view the video on the device memory card, and you can select the video, and download, save, share or manage it.

A	Device select
B	Downloaded video list
C	Downloading video list
D	File list in memory card





4) 查看和管理设备的报警信息。

在该界面下，你可以查看、管理设备的报警信息，并且可以将你需要的设备的报警信息筛选出来。在设备的高级配置中，你可以对报警功能的相关参数进行设置，以实现设备的安防监控功能。

4) View and manage device alarm information.

In this interface, you can view, manage the alarm information of the device, and you can filter out the alarm information of the devices you need. In the advanced configuration of the device, you can set the relevant parameters of the alarm function to realize the security monitoring function of the device.

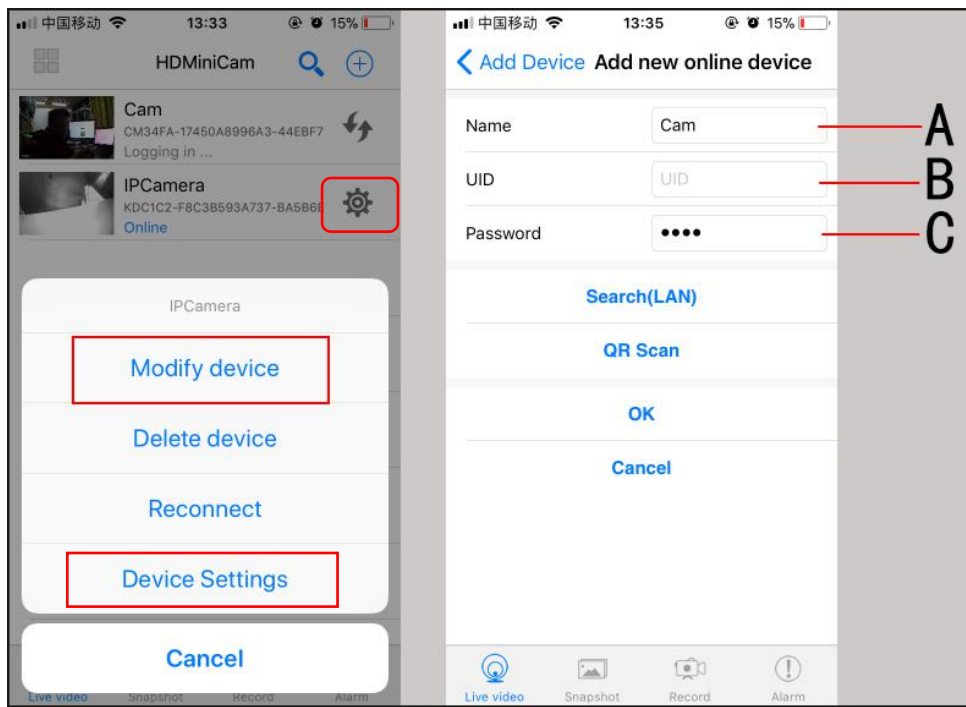
5) Modify the device

You can configure the device to modify, including:

5) 修改设备

你可以对设备进行配置修改修改，包括：





● 设备信息:

A	设备名称	修改名称使得你更直观的知道该设备的拍摄地点和用途
B	UID	修改 UID, 使得你在与设备建立 WiFi 连接的时候, 更加简洁醒目, 也更方便记忆。
C	密码	设置和定期修改密码, 可以使得连接更加安全, 从而更好的保护你的隐私。

● Device info:

A	Device Name	Modify the name. Easier to know the location or purpose of the device
B	UID	Modify UID, make it simple and easy to remember
C	Password	Set and regularly change the password, you can make the connection more secure, so as to better protect your privacy.

- 删除设备: 如果有些设备属于不重要、不必要或者已经停止使用, 你可以在设置菜单中将该设备从设备列表中删除掉。
- 重新连接: 有时候设备传输的影像不够流畅, 这时, 你可以通过刷新与设备的连接来尝试解决该问题。
- 高级配置: 该菜单下有很多重要的参数设置, 特别是其中的几个重要功能, 会在后面着重介绍, 其他部分选项按照正常步骤和 APP 的提示设置即可。

Delete Device: If some devices are unimportant, unnecessary or have been stopped, you can delete the device from the device list in the setup menu.

Reconnection: Sometimes the image transmitted by the device is not smooth enough. At this time, you can try to solve the problem by refreshing the connection with the device.

Advanced Configuration: There are many important parameter settings under this menu, especially some of the important features, which will be highlighted later. The other options are set according to the normal steps and APP prompts.

6) 高级配置中的重要选项说明

6) Description of important options in advanced configuration

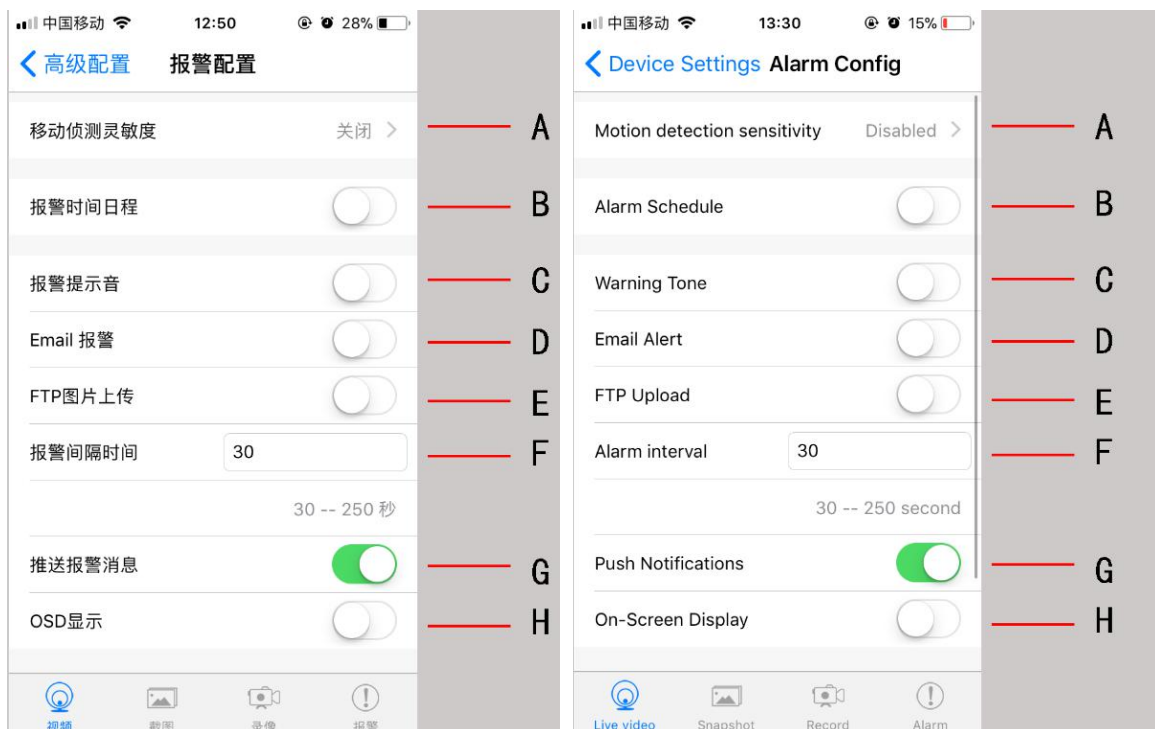


- 报警配置

报警功能是本设备的重要功能，通过对其进行合理配置，才能最大化的发挥设备的作用。报警功能的配置选项和说明如下：

#### Alarm configuration

Alarm function is an important function of this device. It can maximize the function of device through reasonable allocation. The configuration options and descriptions of alarm functions are as follows:



A	移动侦测灵敏度	移动侦测功能是指，当摄像头中的景物发生变化或者正在移动，则会触发相关的功能，比如向手机推送报警音、发送邮件等等。移动侦测功能可以打开或者关闭，其灵敏度分为7级，灵敏度越高，则微小的画面都可以对设备进行触发，灵敏度越低，则需要较大的画面变化幅度才能触发。
B	报警时间日程	报警的时间段设置，即设置设备在哪些时段才会进行侦测和报警。
C	报警提示音	选择手机收到设备推送的信息后，发出的警报提示音。
D	Email 报警	发送相关的报警信息到你的邮箱中，Email 的相关设置在后面有简要的描述。
E	FTP 图片上传	发送相关的报警信息到指定的 FTP 上，FTP 的相关设置在后面有简要的描述。
F	报警时间间隔	设置时间范围在 30~250S 长度的报警间隔，当设备被触发后，必须要等到该间隔时间以后才能再次被触发。
G	推送报警消息	选择是否发出警报信息给手机端或者 pc 端软件。
H	OSD 显示	是否在视频画面上叠加相关的信息字符。

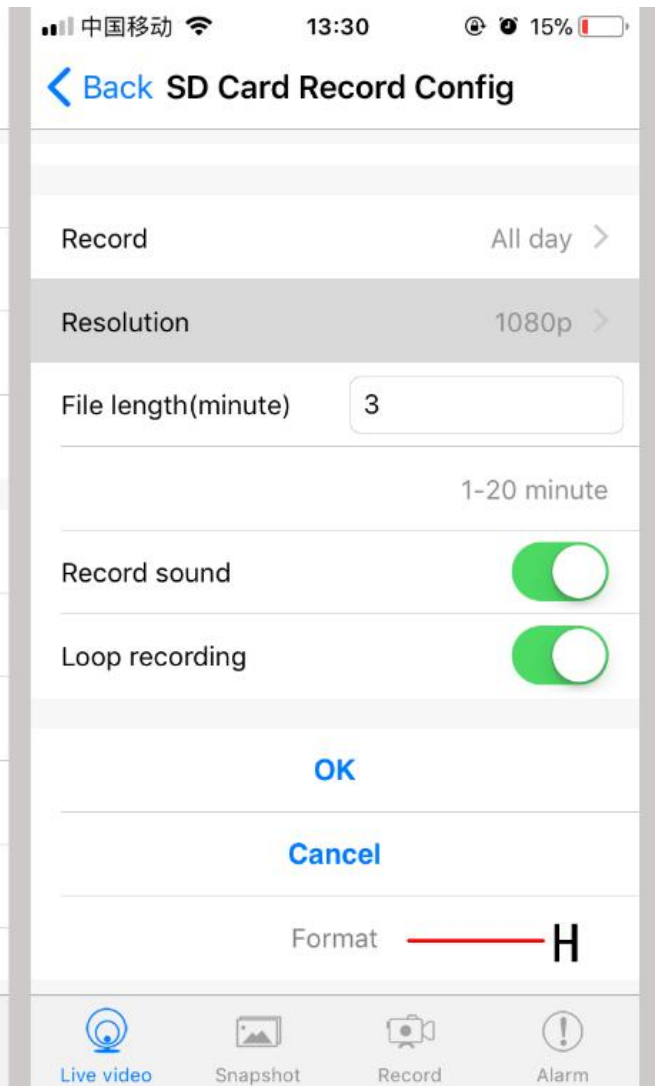
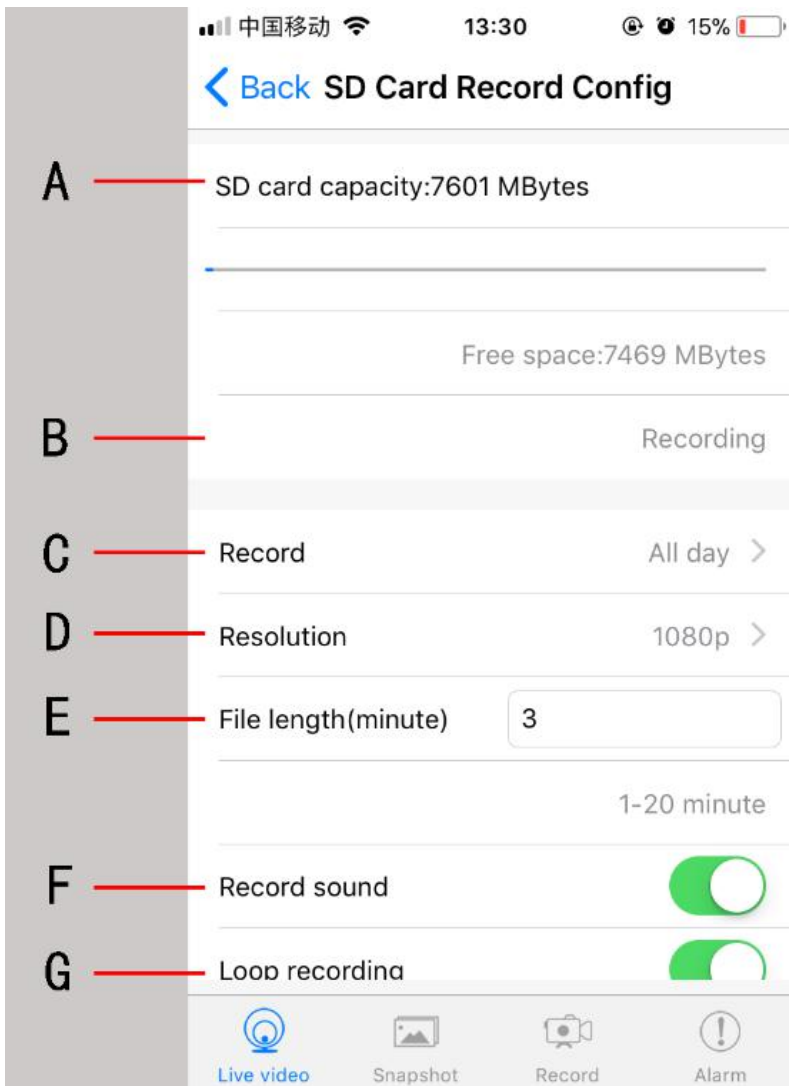
A	Motion detection sensitivity	Motion detection means that when the objects in screen changes or are moving, it will trigger the relevant functions, such as forwarding the alarm tone to the phone, sending mail and so on. Motion detection can be turned on or off. The sensitivity is divided into seven: for the higher sensitivity, the tiny change in screen can trigger the device; for the lower sensitivity, it need a big change in screen to trigger the device.
B	Alarm time schedule	Alarm time schedule settings: set the device in which period will be detected and alarm.
C	Alarm tone	Select the alarm tone: the alarm tone in the mobile phone when it receives the information forwarded by the device.
D	Email alarm	Send the relevant alarm information to your email, the related setting of Email is briefly described below.
E	FTP image upload	Upload relevant alarm information to appointed FTP, the related setting of FTP is described briefly below.
F	Alarm interval	Set the time interval between 30 ~ 250 seconds, when the device is triggered, it must wait alarm interval for the next triggering.
G	Forward alarm message	Select whether to send alarm information to the phone or PC software.
H	OSD display	Whether to superimpose related information on the video.

- SD 卡录像设置

SD 卡录像设置也是本设备的重要功能，当设备中插入了设备所支持的 TF 存储卡后（micro sd 卡），就能开启更多实用的功能，同时可以对这些功能进行参数设置。

Memory card recording settings

Memory card recording setting is also an important function of the device. When the TF card (supported by the device) is inserted in the device (micro SD card), more practical functions can be enabled and the parameters can be set for these functions.







A	SD 卡信息显示	如果插入的存储卡是被设备支持的，并且当前卡的状态也是可用的，则会在此处显示存储卡的容量信息，包括总的存储空间以及剩余空间。
B	录像状态	显示当前是否正在进行录像，是否有往存储卡中存入视频文件。
C	录像模式	该选项可以设置多种录像模式，还可以配合前文的“移动侦测”进行使用。
D	分辨率	设置保存在存储卡中的视频文件的分辨率。
E	每个文件长度	设置视频文件自动分段保存的时间长度，设置范围为 1-20 分钟。
F	录制声音	设置是否需要在视频文件中录制画面现场的声音。
G	循环录像	循环录像功能开启后，当存储卡剩余空间用完时，会自动删除最早的视频文件，并释放存储空间，以供新的视频文件进行保存，拍摄时间越早的视频越先被删除，按照这种时间顺序，持续工作。 如果关闭循环录像功能，则存储卡空间用完后，变不会再进行视频文件的存储。
H	格式化	首次使用的存储卡，或者再其他不同类产品上用过的存储卡，最好在使用本设备前进行一次格式化操作，如果存储卡是不被设备支持的，则无法进行格式化。

A	Memory card information display	If the inserted memory card is supported by the device and the current card status is also available, the memory card capacity information is displayed here, including the total memory space as well as the available space.
B	Video status	Shows whether the device is recording video, whether there save the video file into memory card.

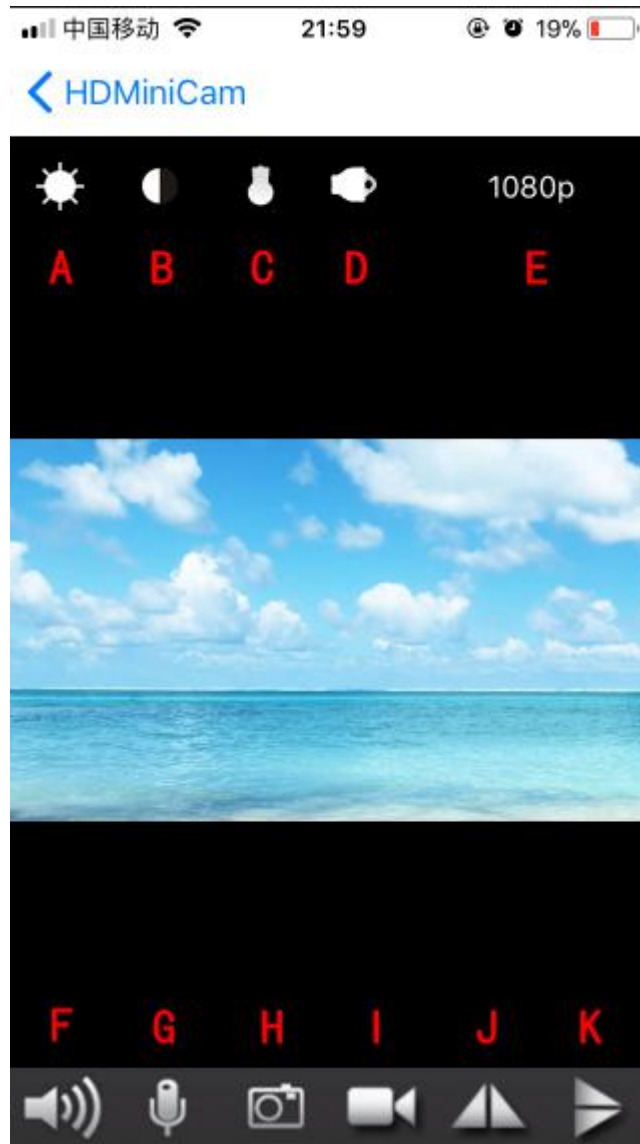
C	Video mode	This option can set a variety of recording modes. Also can work with the "motion detection" .
D	Resolution	Set the resolution of the video file saved on the memory card.
E	Each file time length	Set the length of time that the video file will be automatically saved in segments, the setting range is 1-20 minutes.
F	Sound	Set whether need record the sound of the scene in the video file.
G	Loop video	When the loop recording function is enabled, the earliest video file will be automatically deleted and the storage space will be freed up for saving the new video file when the remaining space of the memory card runs out. The earlier the video is taken, the early the video file is deleted. If you turn off the loop recording function, when the memory card space is fully occupied, the new video can not be saved.
H	Format	For the new memory card, or a memory card used in other device, it is better to format the card before use. If the memory card is not supported by the device, it can not be formatted.

- 时间设置  
设置设备时间。
  - Email 设置  
配置 Email 参数，该选项为不常用项目，并且专业性较强，需要具备专业一些的网络知识。你可以在网络上搜索相关的知识点进行了解，并进行设置。
  - FTP 设置  
配置 FTP 参数，该选项为不常用项目，并且专业性较强，需要具备专业一些的网络知识。你可以在网络上搜索相关的知识点进行了解，并进行设置。
  - 杂项设置  
控制指示灯是否点亮。
  - 修改访问密码  
修改远程设备的连接访问密码。
  - 重启设备  
点击按键重新启动摄像机。
- Time setting  
Set the device time.
- Email settings  
Configure Email parameters. This option is not commonly used and highly specialized. User need have some professional knowledge of the network. You can search the web for relevant knowledge to understand and set up.
- FTP settings  
Configure FTP parameters. This option is not commonly used and highly specialized. User need have some professional knowledge of the network. You can search the web for relevant knowledge to understand and set up.
- Miscellaneous settings  
Configure whether the indicator light is on.
- Modify the access password  
Modify the remote device's connection access password.
- Restart the device

Click the button to restart the camera.

7) 设备视频音频相关的参数设置

7) Video Audio parameter setting



A	Image brightness	Click the button on the main interface to set the brightness parameter of the video.
B	Image contrast	Click the button on the main interface to set the contrast parameter of the video.
C	Image color mode	Click the button on the main interface to set the video color mode to black and white mode or color mode. Note: there is a delay when switching between black and white mode and color mode, please be patient; black and white mode has a better low light effect, in this mode, with infrared LED light, you can still get better image quality in low light ambient.
D	Turn on or off infrared LED	When the ambient light is low, turn on the infrared LED light, you can get a better image.
E	Video transmission resolution	According to your network performance and the resolution you need, choose the right video resolution to get smoother live images or

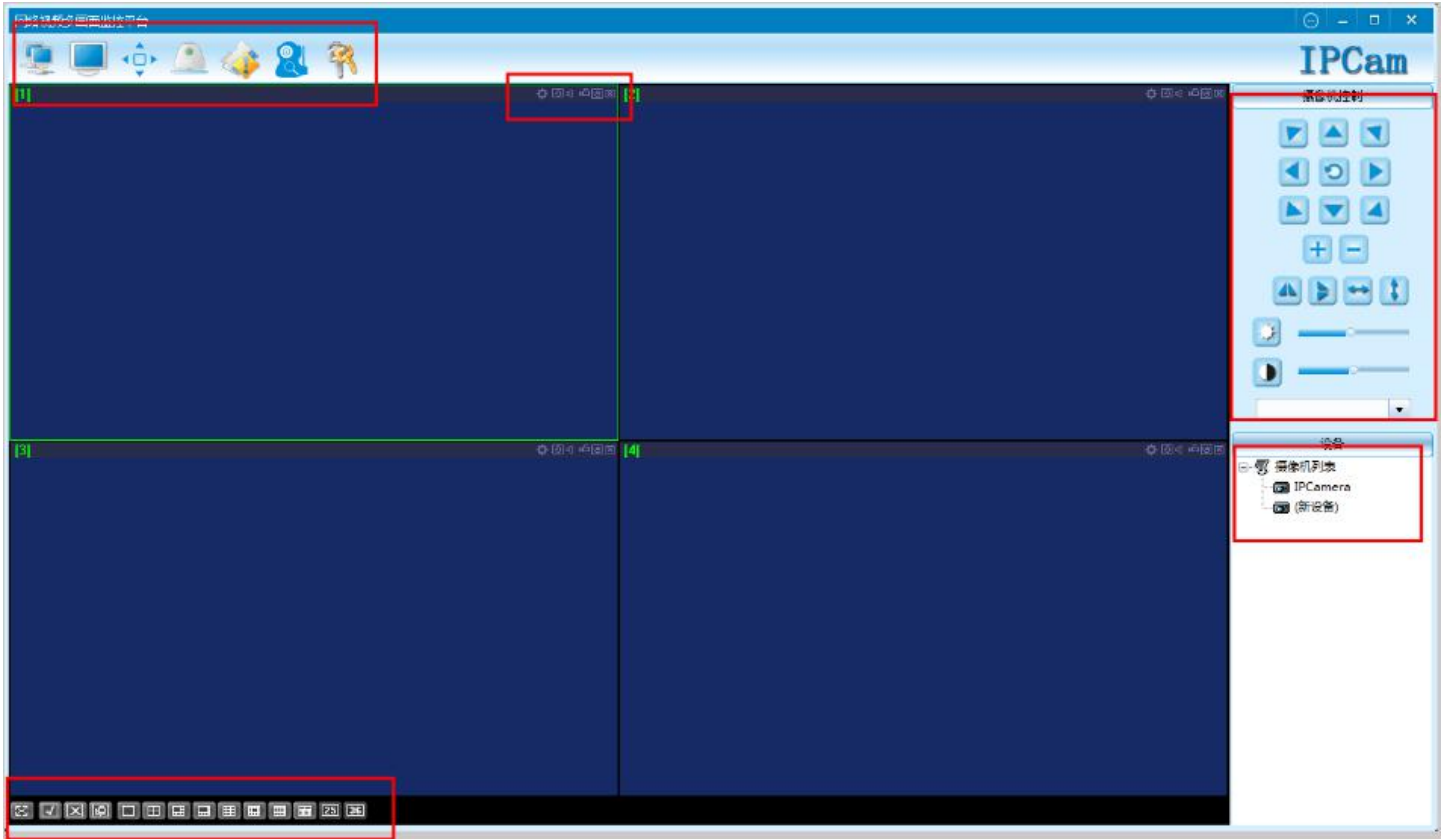
		<p>sharper images. In general, when the network condition is normal, the higher the transmission resolution, the lower the degree of real-time video fidelity.</p>
F	Voice reception function	<p>This button allows you to choose whether or not to listen to the live sound around the device.</p> <p>Turn on the voice receiving function: The device-side microphone will be turned on, and you can hear the live sound while watching live video.</p> <p>Turn off the voice reception: the device-side microphone will be turned off, and you will not hear the live sound while watching live video.</p> <p>When voice reception and the voice sending function are enabled at the same time, it can enable bi-directional intercom function between the device and the mobile phone.</p>
G	Voice sending function	<p>This button allows you to choose whether or not to send the voice of the mobile phone to the device.</p> <p>Turn on the voice sending function: The phone-side microphone will be opened, and you can send your own voice to the device side while watching the live video.</p> <p>Turn off the voice sending function: it will turn off the microphone on the phone side, and you will not send your own voice to the device side while watching the real-time picture.</p> <p>When voice reception and the voice sending function are enabled at the same time, it can enable bi-directional intercom function between the device and the mobile phone.</p>
H	Live video capture	<p>Take a screenshot of the online video and save it to your phone.</p>
I	Mobile phone remote video recording	<p>Record videos of the current online video and save it to your phone.</p>
J	Horizontal image	<p>Because of the way the device is installed, you may not be able to get the correct direction of the image. Click the button, you can flip the image horizontally. With the image vertical mirror setting, the image direction can meet your requirements</p>
K	Vertical image	<p>Because of the way the device is installed, you may not be able to get the correct direction of the image. Click the button, you can flip the image vertically. With the image horizontal mirror setting, the image direction can meet your requirements</p>

## 6. 通过电脑端软件连接设备

除了手机 APP 之外，你还可以通过 PC 端软件连接设备，并进行相关参数的设置。PC 端软件一般都在随机附赠的光盘上面，拷贝安装即可。PC 端软件的大概界面如下：

### 6. Connect device through PC software

In addition to mobile phone APP, you can also connect the device through the PC software, and set the relevant parameters. PC software are generally the CD attached. You can copy and install in the computer. PC software interface is as following:



图上红色框线的地方都是一些设置区域，将鼠标移上去后，会有对应的选项提示，标明这是一个什么按钮。这些按钮对应的功能，跟 APP 上面的功能基本都是一致的，每一个设置选项的作用和解释，请参考 APP 部分的描述和解释。

The area inside red border lines is settings area. Move the mouse up, there will be a corresponding option prompt, indicating what the button is. The corresponding functions of these buttons are basically the same as those of the APP above. For the function and explanation of each setting option, please refer to the description and explanation of the APP section.

## 7. Play the files on the memory card on your computer:

The video format stored by this device is generally not supported by the system's own player. It requires the multi-format media player software such as KM player and VLC Player.

## 8. Device Charge:

Connecting the device to a standard DC 5V @ 1A @ USB power supply through a standard Micro USB cable, it can both charges the battery inside the device and provides continuous power to the device.

## 9. Format memory card:

When using the device for the first time, format the memory card by using your phone's app or computer software.

## 10. Restore the factory settings:

After the boot is complete, with a toothpick, paper clips and other hard stick, get into the reset switch hole, press the reset switch for more than 5 seconds, until all the lights go out, you can release, the device will restore the factory default settings. Factory default settings mode: Phone direct mode (point to point mode).



## 11. Specifications

### 7. 在电脑上播放存储卡中的文件：

本设备存储的视频格式一般系统自带的播放器都不支持，需要使用如 KM player,VLC Player 等多格式媒体播放软件才能正常播放。

### 8. 设备充电：

通过标准的 Micro USB 线，将设备连接到标准直流 DC 5V@1A 的 USB 电源上，既能对设备内部的电池进行充电，也能给设备提供持续的供电。

### 9. 格式化存储卡：

第一次使用摄像机时，请对存储卡进行格式化，通过手机 APP 或者电脑端软件。

### 10. 恢复出厂设置：

开机完成后，用牙签、曲别针等坚硬纤细小棍，伸入重置开关孔，按压重置开关 5 秒以上，直到所有的指示灯熄灭后，即可松开，此时设备会恢复出厂设置，出厂设置的默认工作模式为：手机直连模式（点对点模式）。

## 11. 规格参数

### 11 Specification:

项目	参数
分辨率	1080P/720P/640P
视频格式	ASF
帧数	1080P@15fps,720P@25-30fps,640P@30fps
视角	水平 140 度
移动侦测摄像距离	直线 6 米
最小照度	1LUX
电池续航时间	100 分钟左右（打开 wifi）
压缩格式	H.264
录音范围	5 m <sup>2</sup>
功耗	290MA/3.7V（打开 wifi）
储藏温度	-20-80 摄氏度
操作温度	-10-60 摄氏度
操作湿度	15-85%RH
记忆卡类型	TF 卡（最大支持 128GB）
播放软件	VLC Player/KM Player
电脑操作系统	Windows/Mac OS X
手机操作系统	Android/iOS
Web 浏览器	IE7 and above,chrome,firefox safari.etc

Item	Specification
Resolution	1080P/720P/640P
Video format	ASF
Number of frames	1080P@15fps,720P@25-30fps,640P@30fps
Perspective	Horizontal 140 degree
Motion detection camera distance	6 meter
Minimum illumination	1LUX
Battery life	100 minutes（Wifi on）
Compression format	H.264
Recording range	5 m <sup>2</sup>
Power consumption	290MA/3.7V（打开 wifi）

stored temperature	-20-80 degree (Celsius)
Operating temperature	-10-60 degree (Celsius)
Operating humidity	15-85%RH
Memory card type	TF card (maximum. 128GB)
Play software	VLC Player/KM Player
Computer operating system	Windows/Mac OS X
Mobile phone operating system	Android/iOS
Web browser	IE7 and above, chrome, firefox, safari etc

## 12. 常见问题:

- 无法连接摄像机:  
首先, 要确认摄像机当前的工作模式处于哪种工作模式, 是否打开了 WiFi 连接功能。然后, 需要确定设备的各个参数设置是否都正常。
- 远程监控不流畅:  
首先需要确保网络环境通畅, 带宽足够, 再根据实际情况选择合理的视频分辨率。
- 观看设备存储卡的视频卡顿:  
由于手机或电脑的解码能力的有所差异, 可通过设置合理的分辨率, 使其适于你的手机或电脑播放。
- 存储卡不保存视频文件或者无法读取:  
请对存储卡进行格式化。注意, 格式化存储卡将会损坏存储卡中的所有数据, 请务必确认存储卡是否确实使用异常, 再谨慎操作。
- 忘记设备的密码:  
请将设备恢复为出厂设置。

## 12. Frequently Asked Questions:

### Can not connect the camera:

First confirm the current working mode of the camera is in which operating mode, whether open the WiFi connection function. Then, you need to confirm whether the various parameters of the device settings are correct.

### remote monitoring is not smooth:

First need to ensure that the network environment is unobstructed and the bandwidth is sufficient. Then, a reasonable video resolution can be selected according to the actual situation.

### The video playing in the memory card is not smooth

Due to differences in the decoding capability of your phone or computer, you can make it suitable for your phone or computer by setting a reasonable resolution.

### The memory card does not save the video file or can not read:

Please format the memory card. Please be noted that formatting the memory card will erase all the data on the memory card. Make sure whether that the memory card is normal condition, then take the further method.

### Forgot your device's password:

Please reset the device to factory settings.